

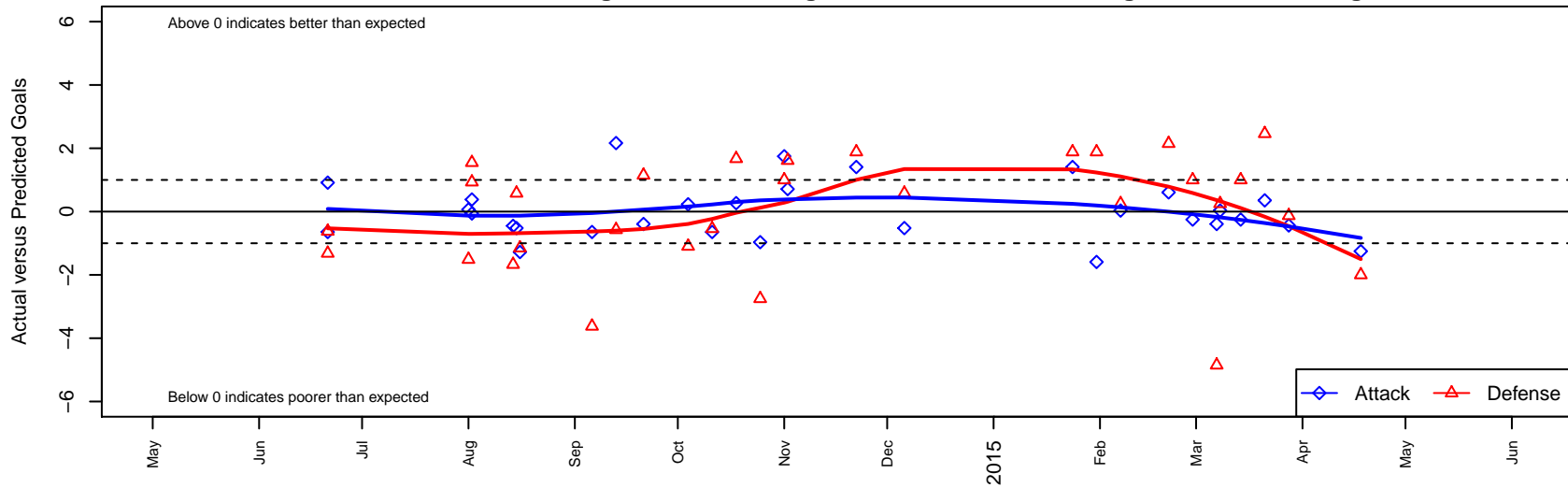
Snohomish United Red G01

Snohomish Youth SC
 Snohomish, WA
 G01 total strength=694
 attack=0.92 defense=0.52
 fall league = RCL G01 Div 4
 spr league = Win RCL G01 Div 5

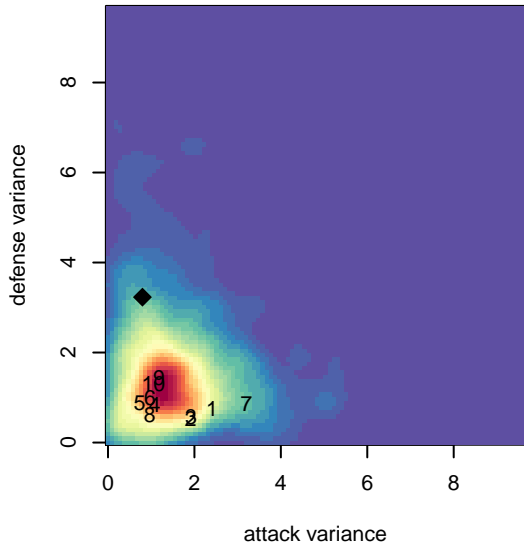
alt names used:

Venues played:
 2014 Snohomish United Invt U13 Silver
 2014 Strawberry Classic GU13
 2014 Bigfoot Silver U13
 2014 RCL G01 Div 4
 2014 Win RCL G01 Div 5
 2014 WYS Presidents Cup G01 Division 2

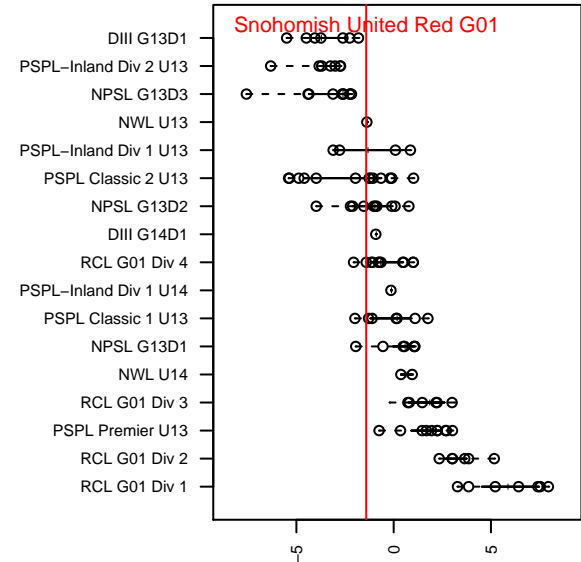
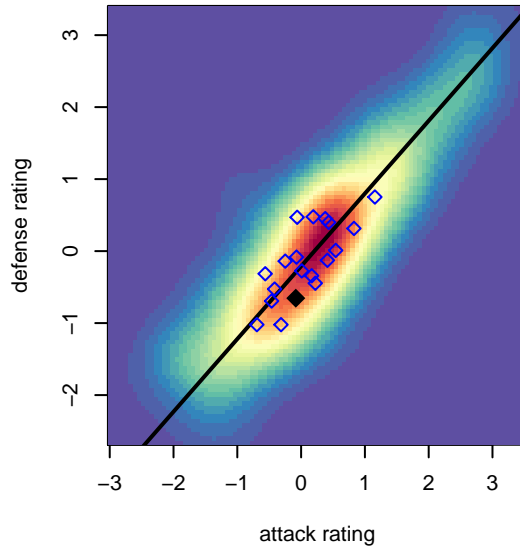
Snohomish United Red G01
 Dots are actual minus expected GF (blue circles) and GA (red triangles).
 Blue line is smoothed change in attack strength. Red is smoothed change in defense strength.



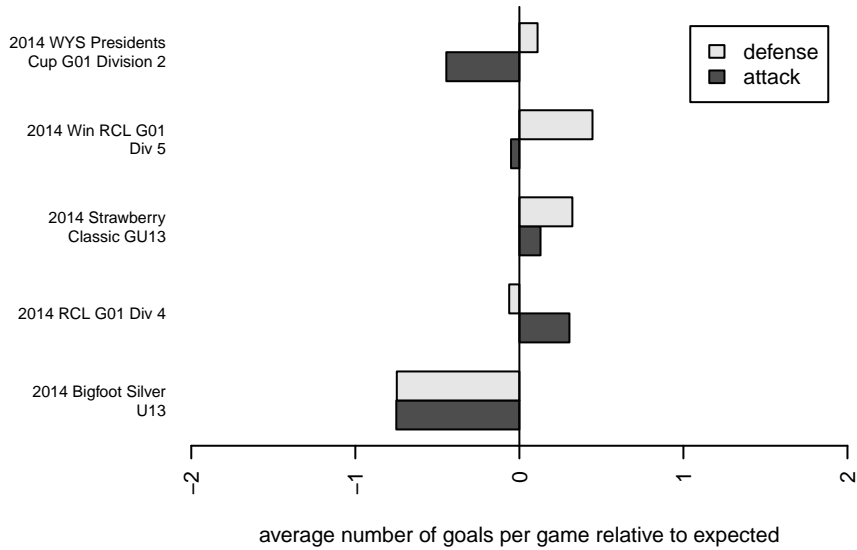
**attack and defense variance (black dot)
relative to other teams
and top 10 in region**



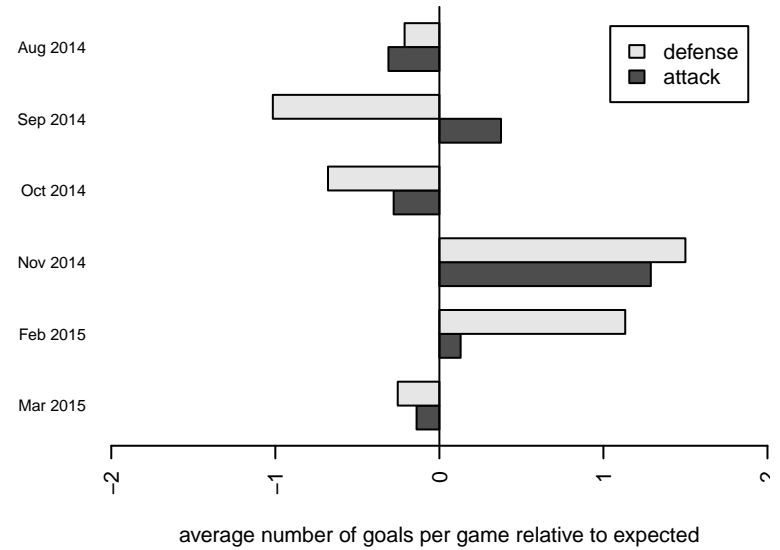
**attack and defense rating
relative to others at age
and all opponents in last 13 months**



Performance relative to 13 month average



Performance relative to 13 month average



date	home		away		venue	pred.home	pred.away
2015-04-18	Snohomish United Red G01	0	FC Alliance B G01	4	2014 WYS Presidents Cup G01 Division 2	1.25	2.00
2015-03-28	PacNW Blue G01	6	Snohomish United Red G01	0	2014 WYS Presidents Cup G01 Division 2	5.87	0.44
2015-03-21	Whatcom FC Rangers Blue G01	1	Snohomish United Red G01	1	2014 WYS Presidents Cup G01 Division 2	3.46	0.65
2015-03-14	Snohomish United Red G01	1	FC Alliance B G01	1	2014 Win RCL G01 Div 5	1.25	2.00
2015-03-08	WPFC C G01	1	Snohomish United Red G01	2	2014 Win RCL G01 Div 5	1.25	1.97
2015-03-07	Snohomish United Red G01	1	SSC Shadow B G01	7	2014 Win RCL G01 Div 5	1.39	2.15
2015-02-28	FC Alliance B G01	1	Snohomish United Red G01	1	2014 Win RCL G01 Div 5	2.00	1.25
2015-02-21	SSC Shadow B G01	0	Snohomish United Red G01	2	2014 Win RCL G01 Div 5	2.15	1.39
2015-02-07	Snohomish United Red G01	2	WPFC C G01	1	2014 Win RCL G01 Div 5	1.97	1.25
2015-01-31	NWN Blue G01	0	Snohomish United Red G01	0	2014 Win RCL G01 Div 5	1.88	1.59
2015-01-24	Snohomish United Red G01	3	NWN Blue G01	0	2014 Win RCL G01 Div 5	1.59	1.88
2014-12-06	Eastside FC Blue G01	2	Snohomish United Red G01	1	2014 RCL G01 Div 4	2.58	1.52
2014-11-22	Snohomish United Red G01	3	NWN Blue G01	0	2014 RCL G01 Div 4	1.59	1.88
2014-11-02	Snohomish United Red G01	2	Crossfire Yakima G01	0	2014 RCL G01 Div 4	1.29	1.61
2014-11-01	FC Alliance B G01	1	Snohomish United Red G01	3	2014 RCL G01 Div 4	2.00	1.25
2014-10-25	WPFC C G01	4	Snohomish United Red G01	1	2014 RCL G01 Div 4	1.25	1.97
2014-10-18	Kitsap Alliance Black G01	0	Snohomish United Red G01	1	2014 RCL G01 Div 4	1.67	0.73
2014-10-11	Whatcom FC Rangers Blue G01	4	Snohomish United Red G01	0	2014 RCL G01 Div 4	3.46	0.65
2014-10-04	Blackhills FC Black G01	4	Snohomish United Red G01	1	2014 RCL G01 Div 4	2.90	0.77
2014-09-21	Snohomish United Red G01	1	SSC Shadow B G01	1	2014 RCL G01 Div 4	1.39	2.15
2014-09-13	Snohomish United Red G01	3	RV Slammers White G01	5	2014 RCL G01 Div 4	0.84	4.43
2014-09-06	Snohomish United Red G01	0	PacNW White G01	6	2014 RCL G01 Div 4	0.65	2.38
2014-08-16	Seattle United W Blue G01	3	Snohomish United Red G01	0	2014 Bigfoot Silver U13	1.85	1.28
2014-08-15	Snohomish United Red G01	1	Eastside FC Blue G01	2	2014 Bigfoot Silver U13	1.52	2.58
2014-08-14	Snohomish United Red G01	1	Seattle United NE Blue G01	3	2014 Bigfoot Silver U13	1.45	1.33
2014-08-02	Granite Falls Thunderbirds G01	0	Snohomish United Red G01	3	2014 Strawberry Classic GU13	0.93	3.06
2014-08-02	Mukilteo Rush G01	0	Snohomish United Red G01	3	2014 Strawberry Classic GU13	1.55	2.62
2014-08-01	Snohomish United Red G01	1	PSA Force G01	5	2014 Strawberry Classic GU13	0.93	3.49

date	home		away		venue	pred.home	pred.away
2014-06-21	Snohomish United Red G01	2	FC Tacoma Blue G01	4	2014 Snohomish United Invit U13 Silver	1.09	2.68
2014-06-21	PacNW White G01	3	Snohomish United Red G01	0	2014 Snohomish United Invit U13 Silver	2.38	0.65